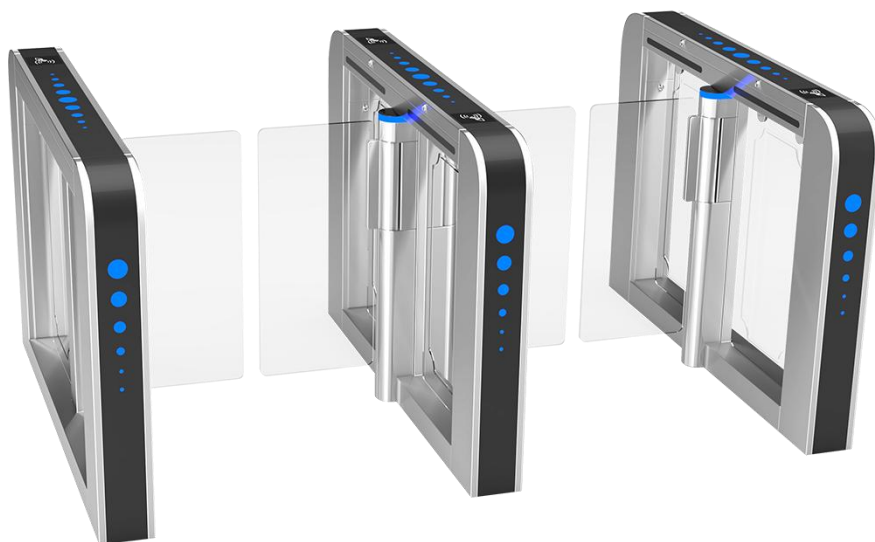




# Manual Book



MODEL:JS-STM039

# Content

1. Mainboard Features.....	2
2. Technical Parameters.....	3
3. Mainboard wiring diagram.....	4
4. Mainboard parameter setting operation flow.....	5
5. Parameter setting table.....	5-7
6. Device installation.....	7
7. Troubleshoot code.....	8
8. Safety attentions.....	8
9. Transportation and storage.....	8

## 1.Main-board Features

1. This control board is suitable for the control of wing gates, swing gates and quick-pass gates equipped with DC brushless servo motors.
2. This control board adopts ARM embedded system as the core of control. It has the advantages of faster processing speed, more powerful function expansion and more stable performance.
3. Adopt full data management, all function parameters are set digitally, setting operation is simpler.
4. The motor drive runs according to the movement curve, the operation is stable and reliable, the state is smooth, and the brake movement is coordinated and synchronized.
5. The equipment is fully functional, with an illegal break-in alarm, a trailing alarm, a reverse processing, an anti-pinch on the ram, and a free passage setting
6. Single or multiple people, motor stall protection, delay of exit passage, peak traffic mode, emergency traffic mode and other functions.
7. Complete interface mode, both PNP and NPN infrared beams on the market can be used. The infrared sensing sequence can be set up and down.
8. Customer-defined indicator output mode. The side lights and ceiling lights can be set according to the needs of the device to display the status of the lamp and the common cathode and common anode of the lamp.
9. The control panel comes with a voice broadcast function, and the directions of the greeting language at the entrance and exit can be set in the menu.

## ***2. Technical Parameters***

Input power:24V/3A

Drive Motor:24V/60W

Infrared sensor interface:NPN normally open collector open circuit

Communication interface:RS232serial port

Communication distance: $\leq 10$ meter

Input interface: 12V level signal or 12V pulse signal with pulse width  $>100$ ms, drive current  $>10$ mA

Output power:DC12V  $\leq 1$ A

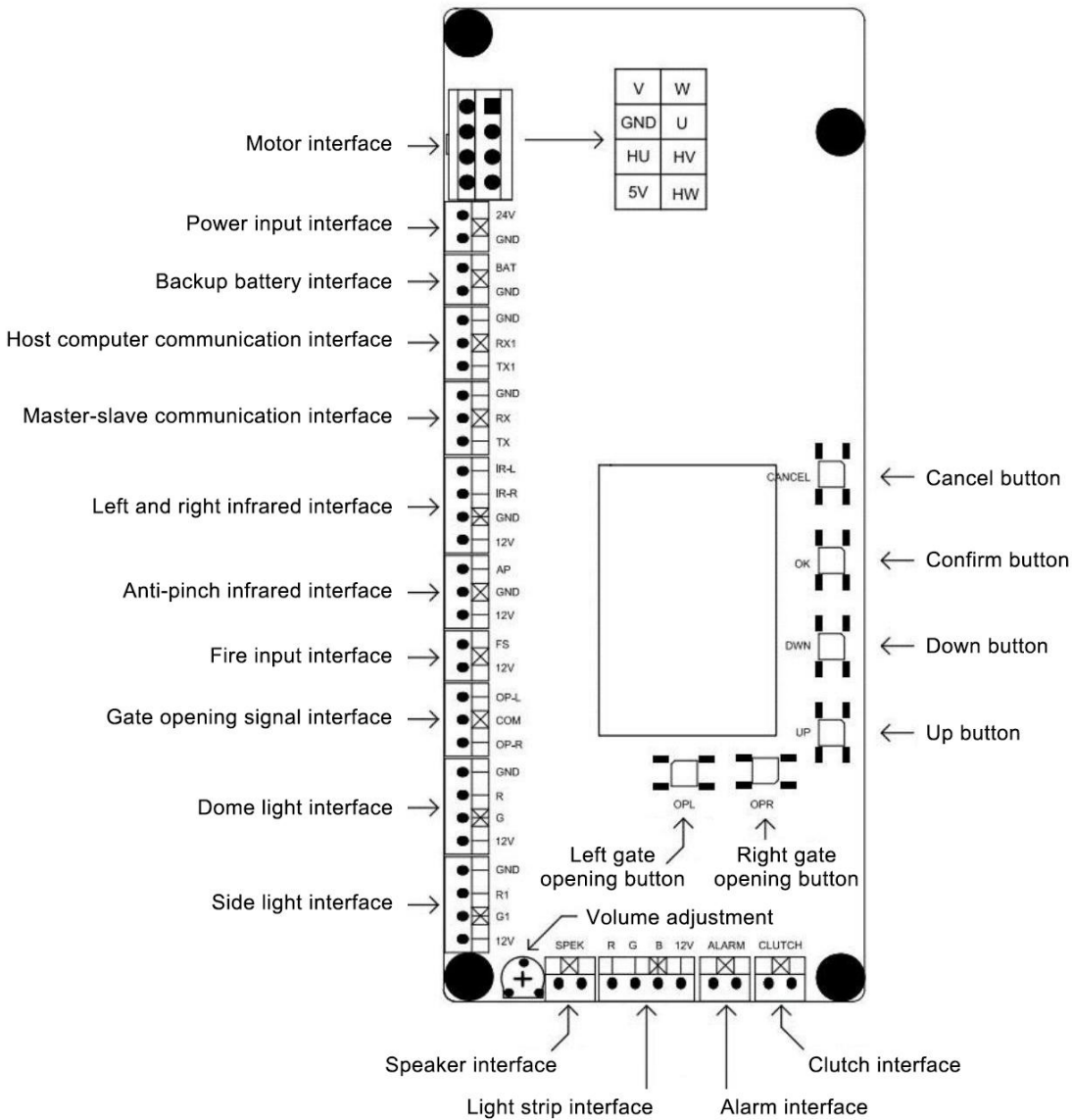
relative humidity:0-90%(No condensation)

environment temperature:-15C-60C

Passing speed: 35 people/min (normally open mode), 25 people/min (normally closed mode)

Gate opening and closing time: 0.8 seconds for flap gates;1-2 seconds for swing gates.

### 3. Main board Description

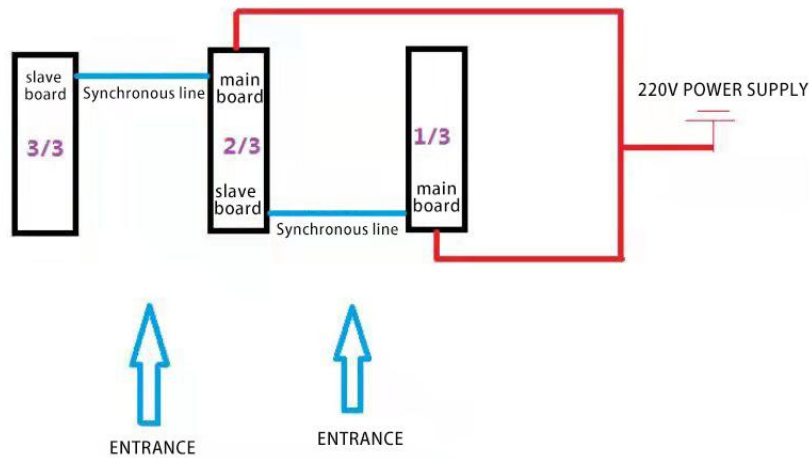


Input power supply: DC/24V/5A	Motor type: DC brush less/24V
Infrared interface: 3 groups/PNP/	Motor power: <60W
NO Light strip interface: RGB/12V/3A/	Communication interface: RS232
Common anode Speaker interface:	Display: LCD/128*64/monochrome
4-8ÿ/10W Standby current: <0.1A	

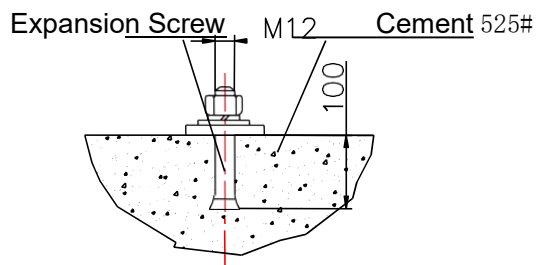
Menu	Parameter range	Parameter description	Remarks
Gate type	Double swing gate single swing gate Wing gate	Configure according to the actual gate	Default: double swing gate
Gate working mode	Swipe card with infrared on the left and right  Set up infrared access and card swipe access  All infrared	Swipe card on the left and infrared on the right	Default: Swipe all
Entrance and exit control: prohibited on the left, allowed on the right	Allowed on the left and prohibited on the right	All banned  Allow all	Default: All allowed
The entrance and exit direction is set to the left as in and the right as out.	The left side is out and the right side is in	Default: left is in and right is out	
Alarm mode	voice	Set the alarm output mode	
Delayed closing time	0-99 seconds	Set the delay time after the passage is completed	Default: 0 seconds
Entrance and exit opening time 1-99 seconds		Set the timeout period after the gate is opened without anyone passing through	Default: 5 seconds
Infrared detection method	Cycling Mode  Sensor door mode	Standard mode: 3 groups of infrared, the middle is anti-pinch  Cycling mode: All infrared sensors are anti-pinch	
Motor rated speed	1000-4000 rpm	Default: 40  Default: 1800 rpm	
Motor speed setting	Maximum motor speed (20-95)  Motor minimum speed (1-20)	Motor maximum speed default: 95  Motor minimum speed default: 5	

Motor confrontation mode	clutch mode	Clutch mode: suitable for movements with clutch	
--------------------------	-------------	---	--

## 5.Device Installation



- ◆ Place the turnstiles in the correct direction and combination.
- ◆ After connecting the power and testing the basic functions are normal, turn off the power and place the turnstile in the entrance where it needs to be installed.
- ◆ Mark the drilling position, punch hole to fix the gate.
- ◆ After set holes, drilled holes, and embedded M12 anchor bolts or expansion bolts.



### Warning

1. The depth of buried PVC pipes should be greater than 60mm, and the height of exposed ground should be greater than 50mm. And the outlet is bent back to prevent water from entering the line pipe
2. When installing access gates, the left and right gates of each channel should be aligned;
3. Connect the system protection ground wire;
4. If the equipment is used outdoors, a 100~200mm high cement level should be built at the equipment installation place. Tailai to isolate moisture, and add sunscreen and rainproof facilities such as roof;
5. After the equipment is installed, the state inspection and functional debugging are qualified before it can be put into normal use.

## ***6.Troubleshooting code meanings***

Display E-1 :Main Motor Hall Error:adjust L-15 to 1

Display E-2 :Slave Motor Hall Error :adjust L-16 to 1

Unmentioned errors, contact with Karsun team for technical trouble-shooting.

## ***7.Safety attentions***

- Do not strike the product with hard objects.
- Handle carefully when using to avoid strong collision with hard objects.
- The product must not be exposed to water or corrosive liquids.
- If smoke or odor is found in the product, disconnect the power immediately.
- If the product is abnormal, please contact the dealer in time. Do not attempt to repair it by yourself. If you do not contact the dealer, handle it without permission, and the company will not be responsible for any damage.

## ***8.Transportation and storage***

- Handle the product with care when handling it.
- During the transportation and storage of the product, care should be taken in a dry and free of corrosive or explosive gas in the surrounding air, and measures should be taken to prevent moisture, rain, sun, and corrosion

Thank you for your support, we are very happy to be your partner and provide you with our services. If you encounter any problems during the installation, you can contact your service manager at any time. We will serve you wholeheartedly ,ENJOY!

----- KARSUN TEAM